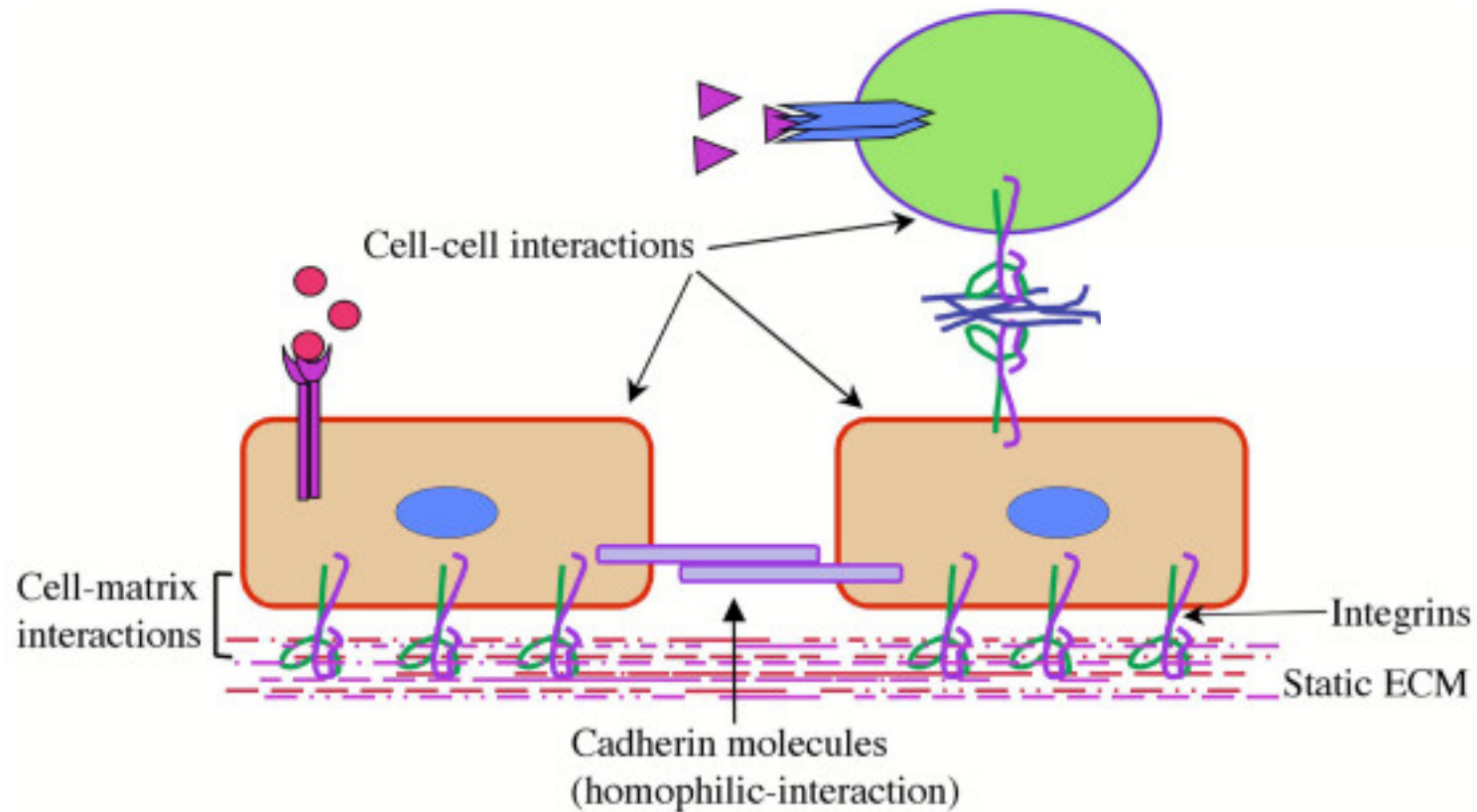


Adesioni cellulari

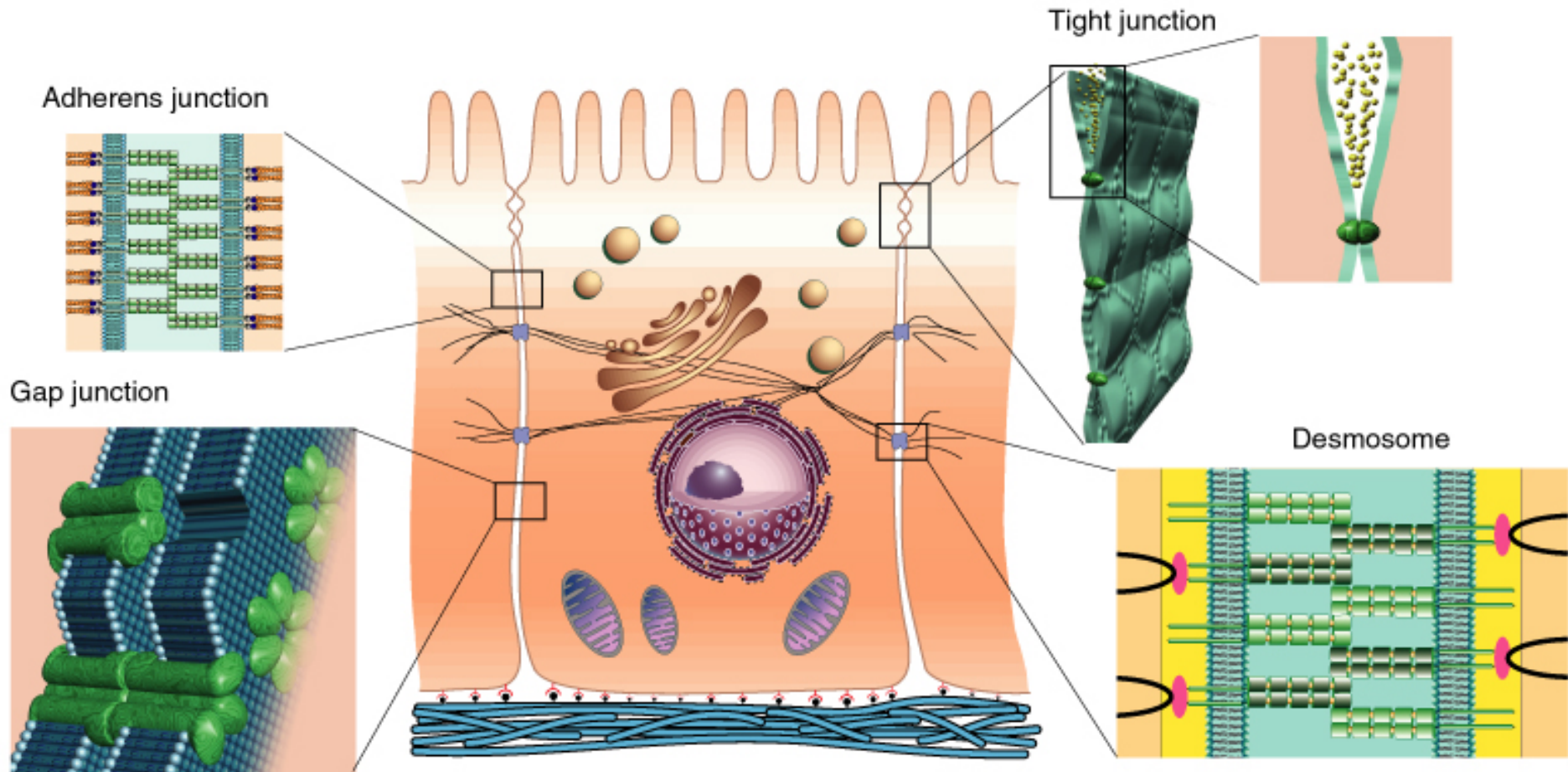
Adesioni omofiliche “cellula-cellula”

Adesioni eterofiliche “cellula-cellula”

Adesione eterofiliche “cellula-matrice extra cellulare (ECM)”

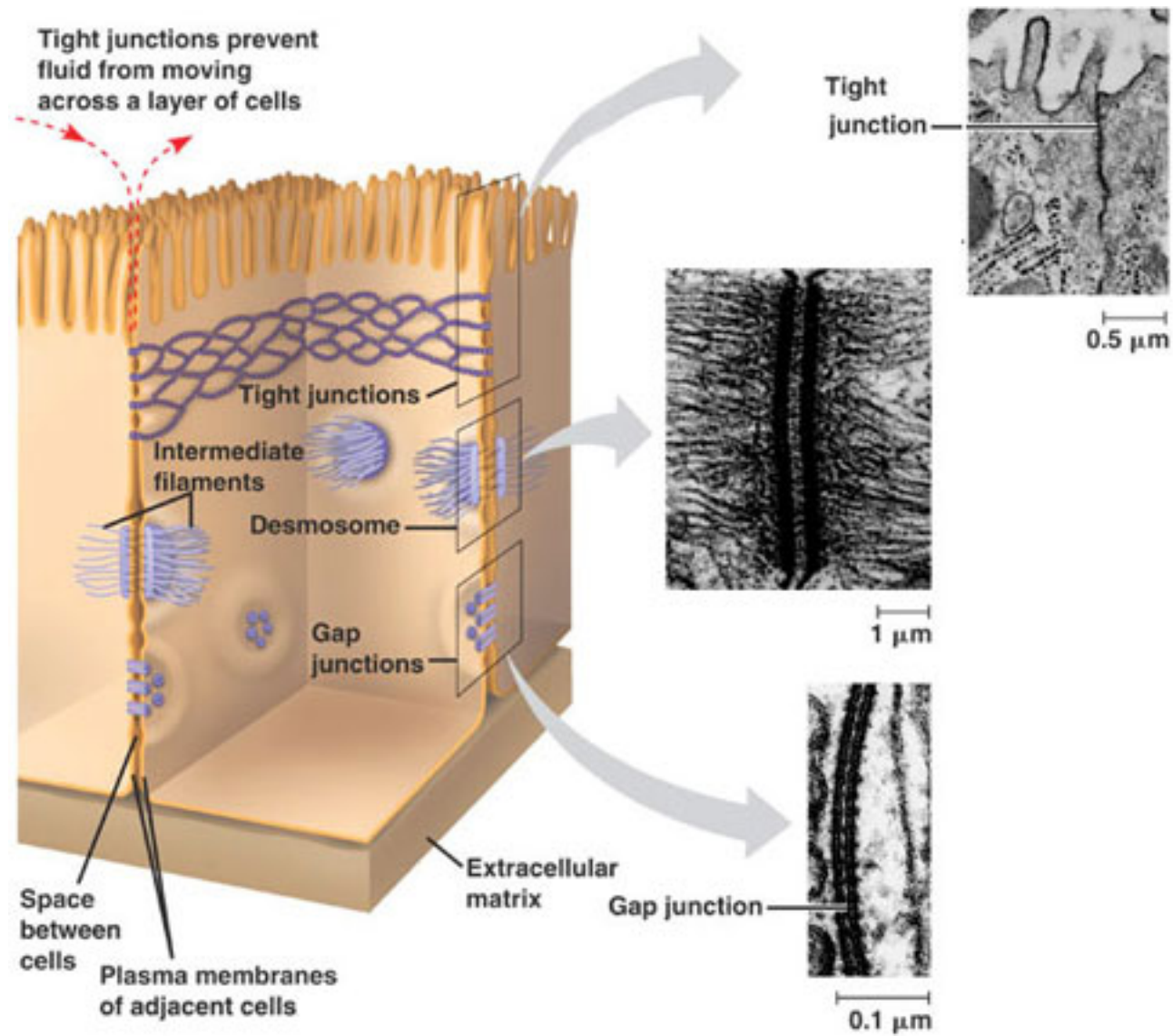


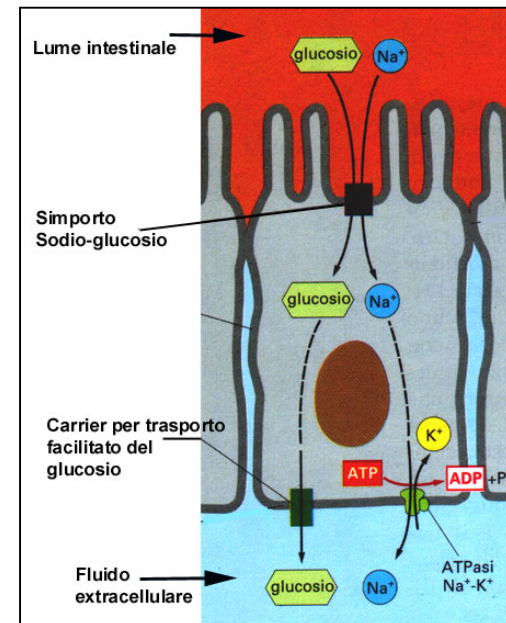
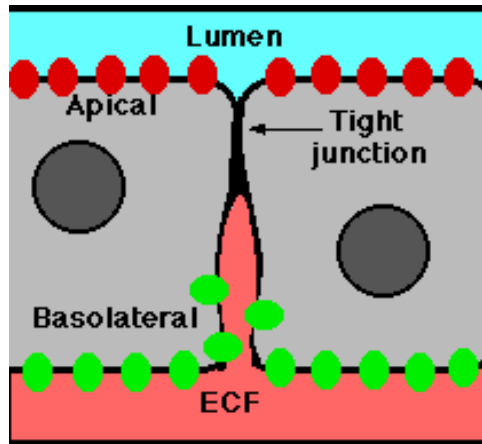
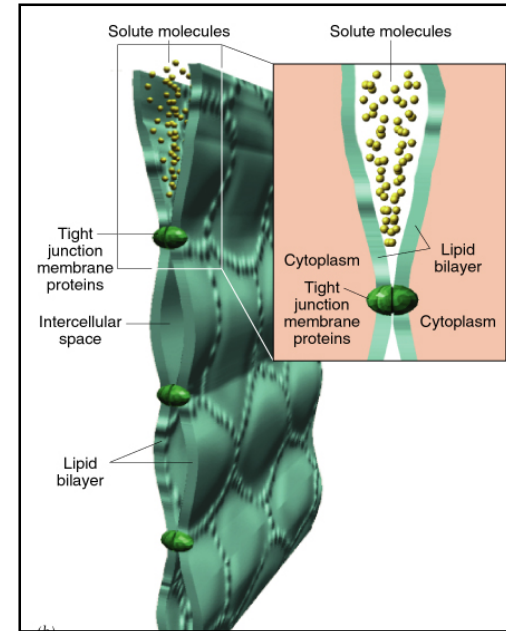
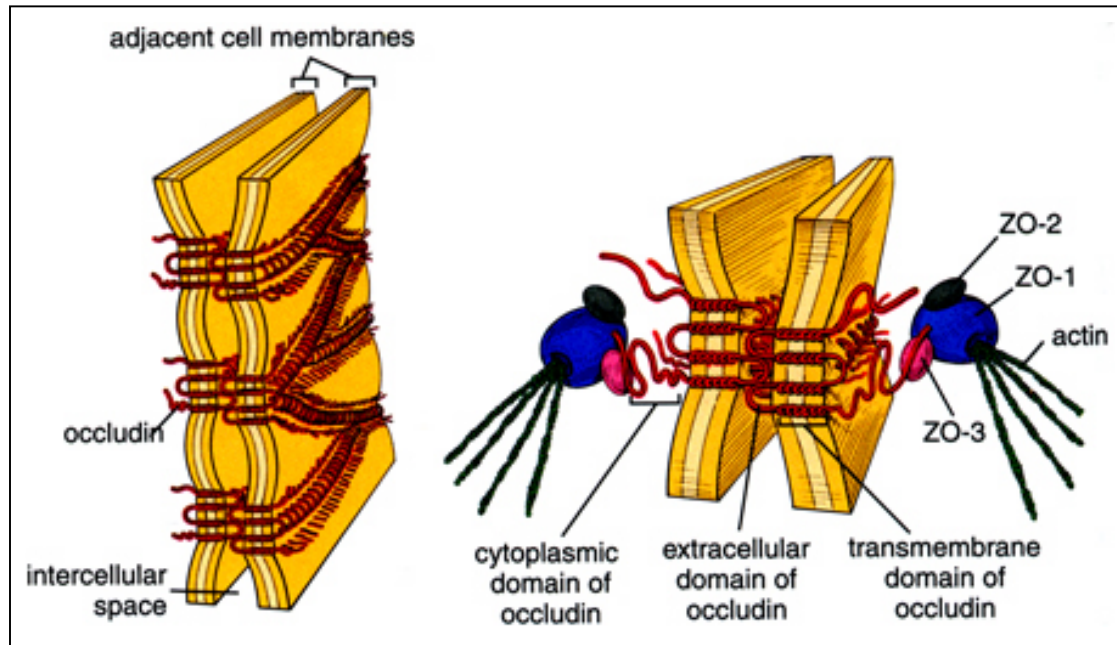
Adesioni omofile "cellula-cellula"

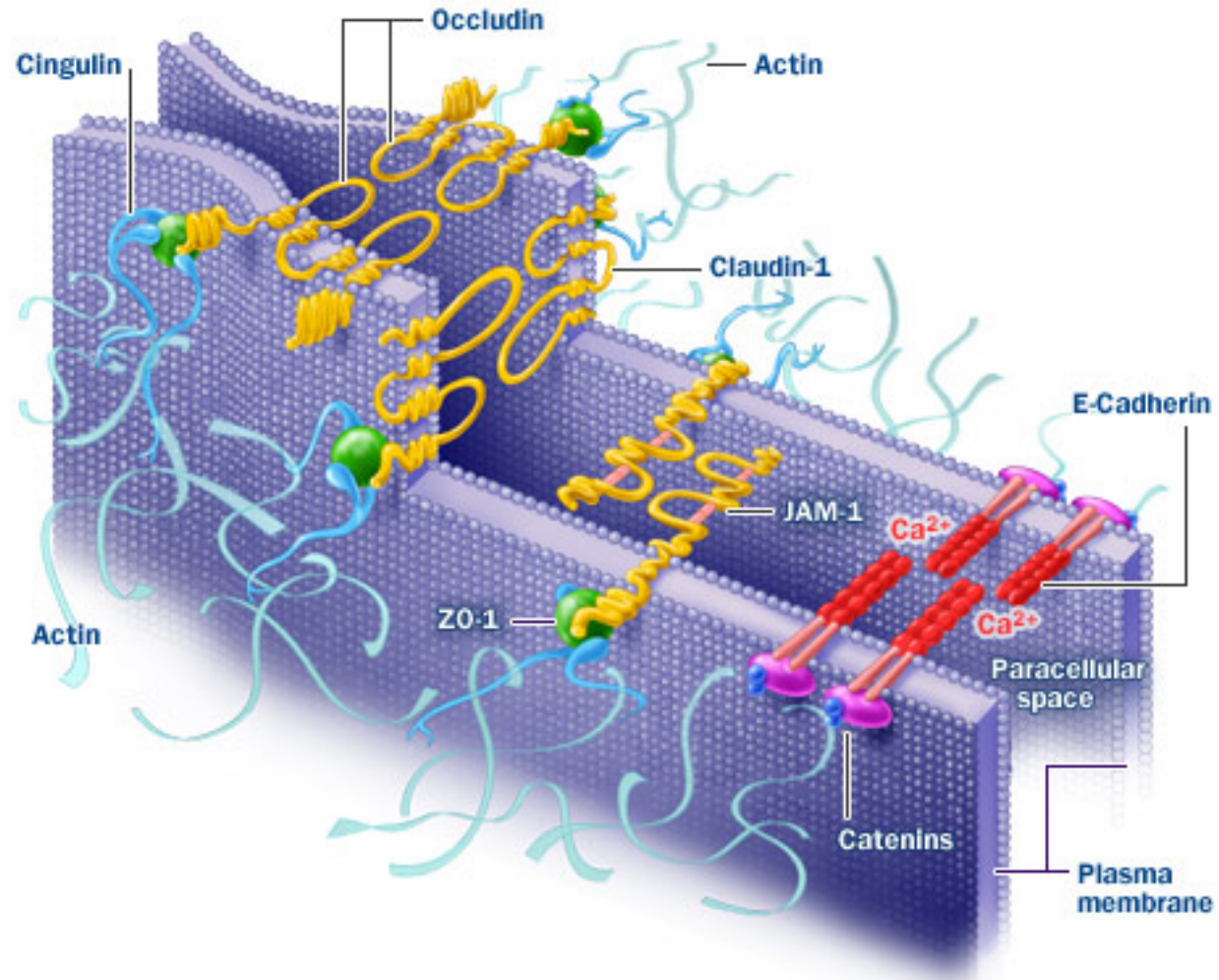


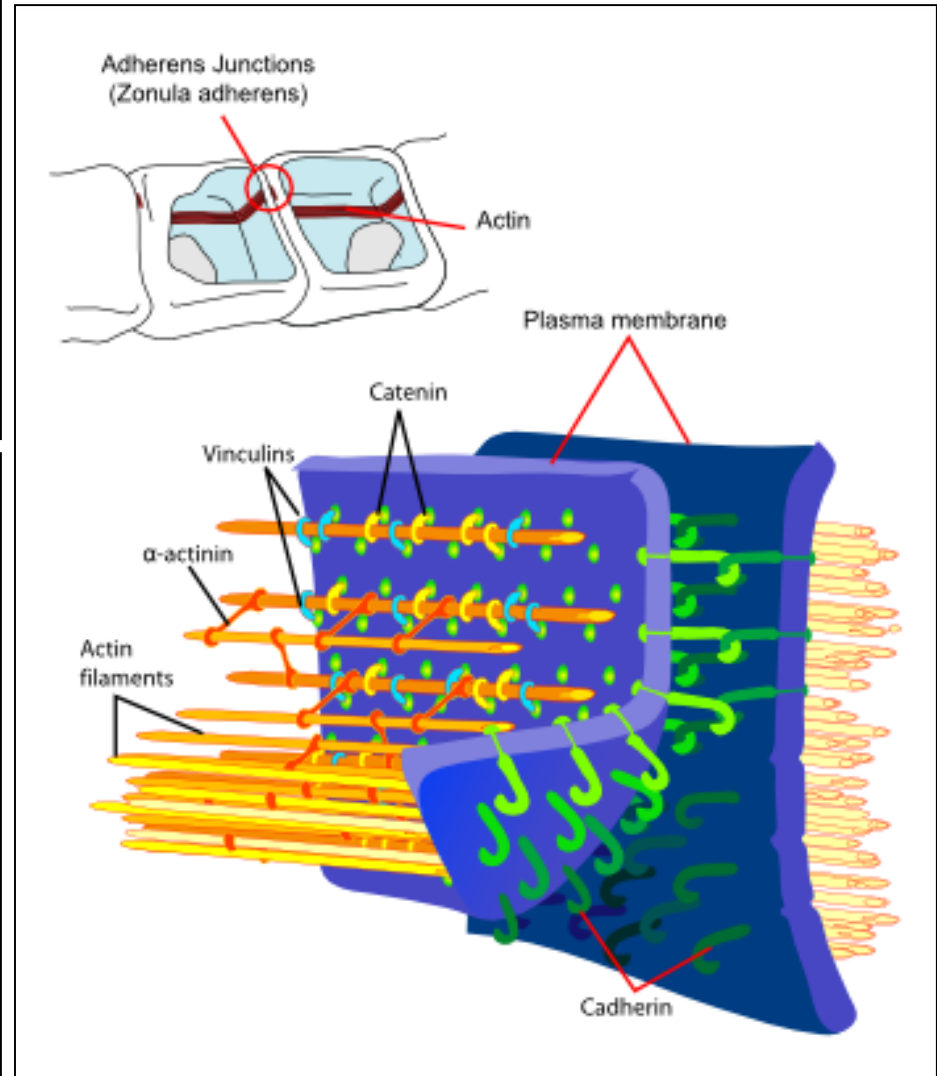
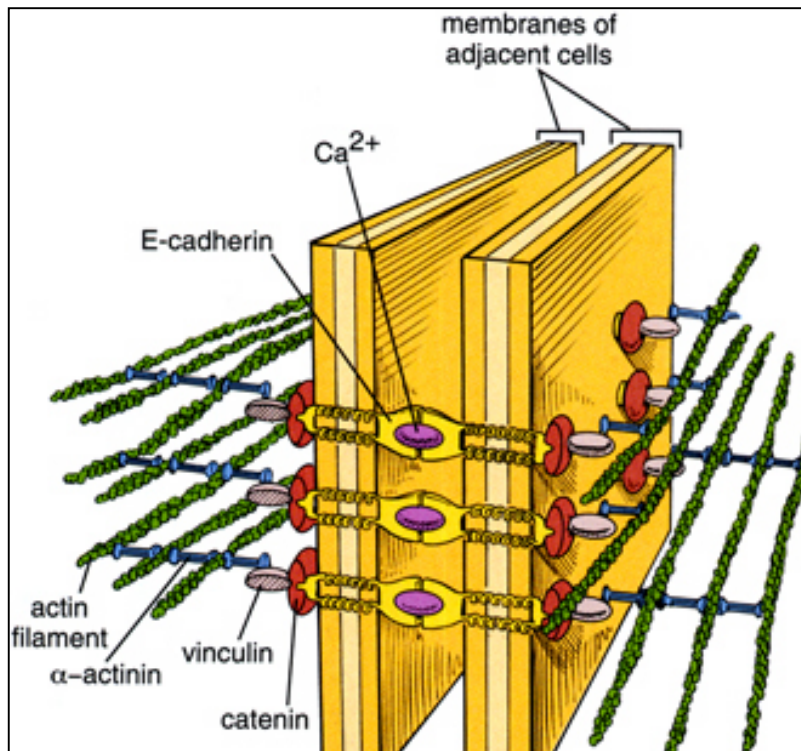
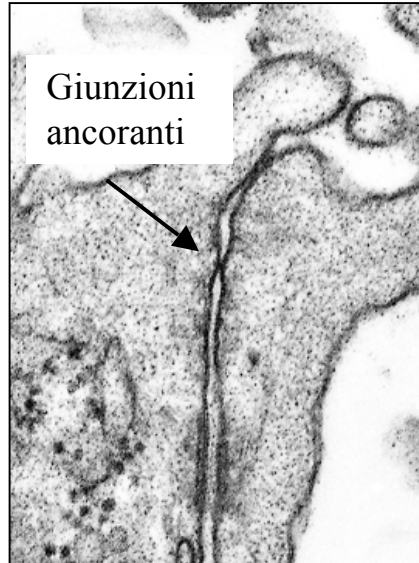
(a)

Copyright 1999 John Wiley and Sons, Inc. All rights reserved.

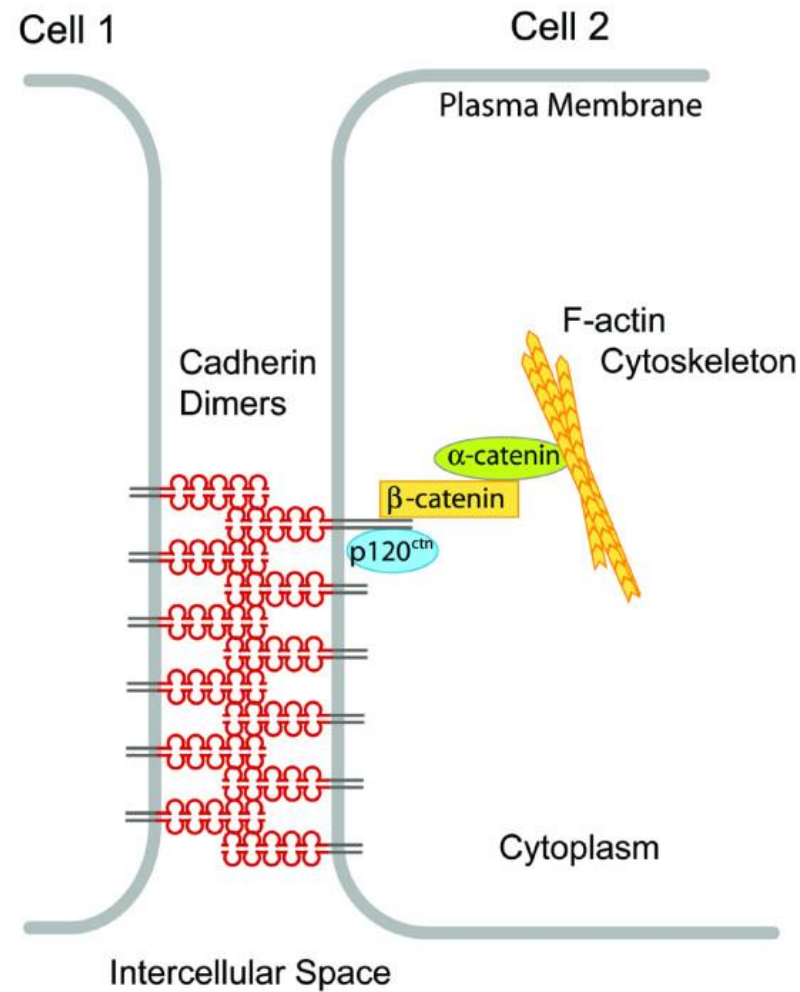






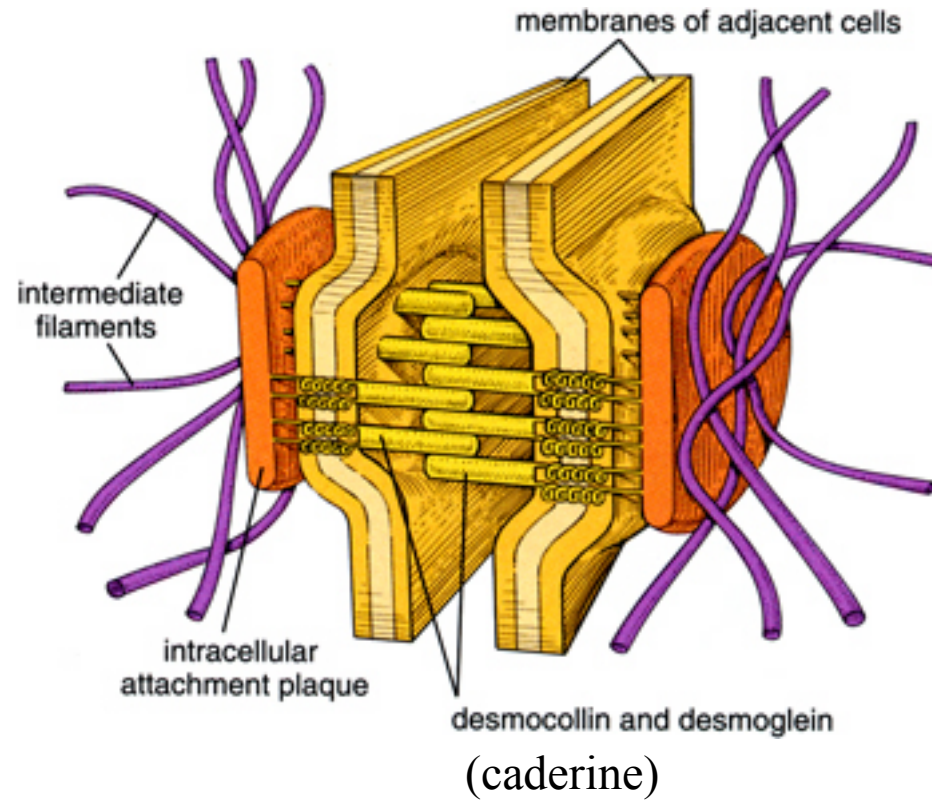
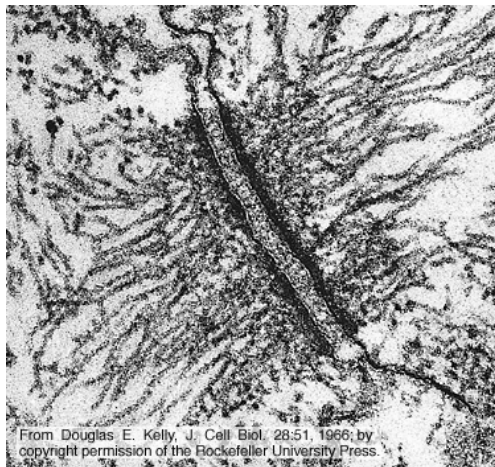
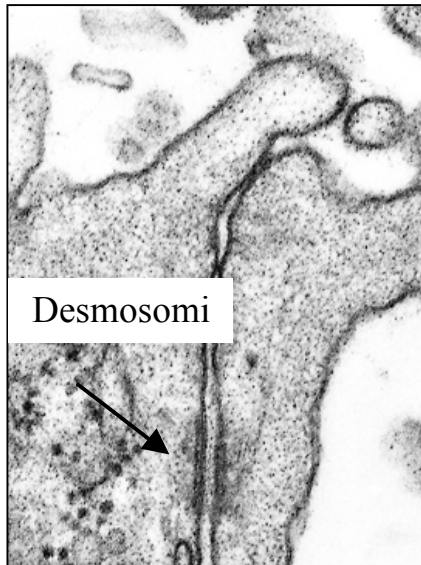


Adherens Junction



Arthritis Research & Therapy

desmosomi



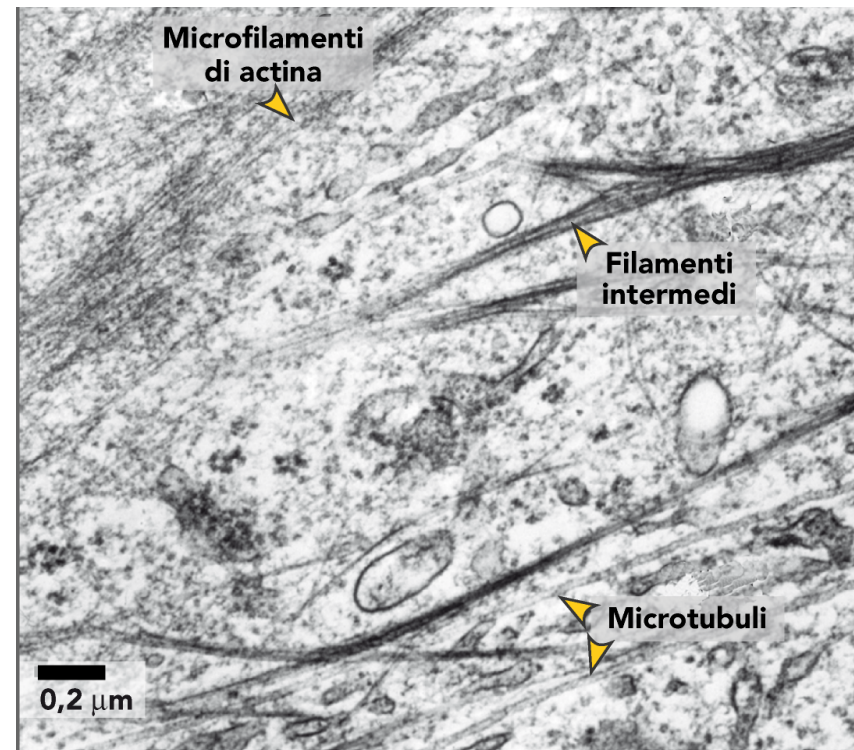
filamenti intermedi

Proteine dei filamenti intermedi

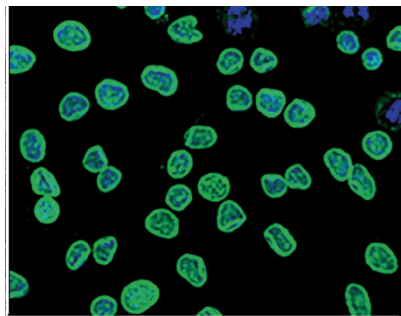
- 6 diversi tipi di proteine fibrose, con distribuzione tessuto specifica:

- CHERATINA
- VIMENTINA
- DESMINA
- PROTEINA ACIDA FIBRILLARE DELLA GLIA GFAP
- PROTEINE DEI NEUROFILAMENTI NF
- NESTINA
- LAMINA NUCLEARE (nucleare, in tutte le cellule)

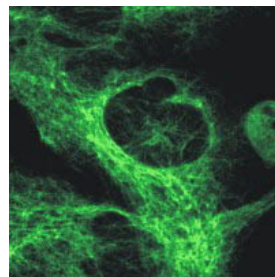
Tessuto
specifiche
citoplasmatiche



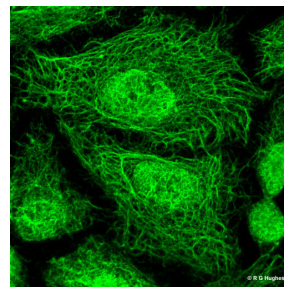
Lamina B



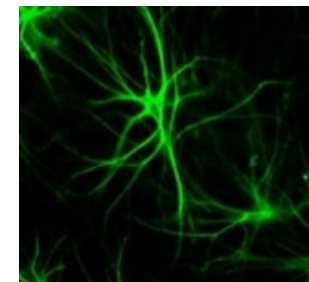
vimentina



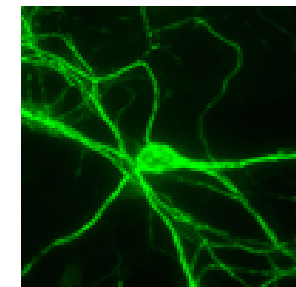
citocheratina



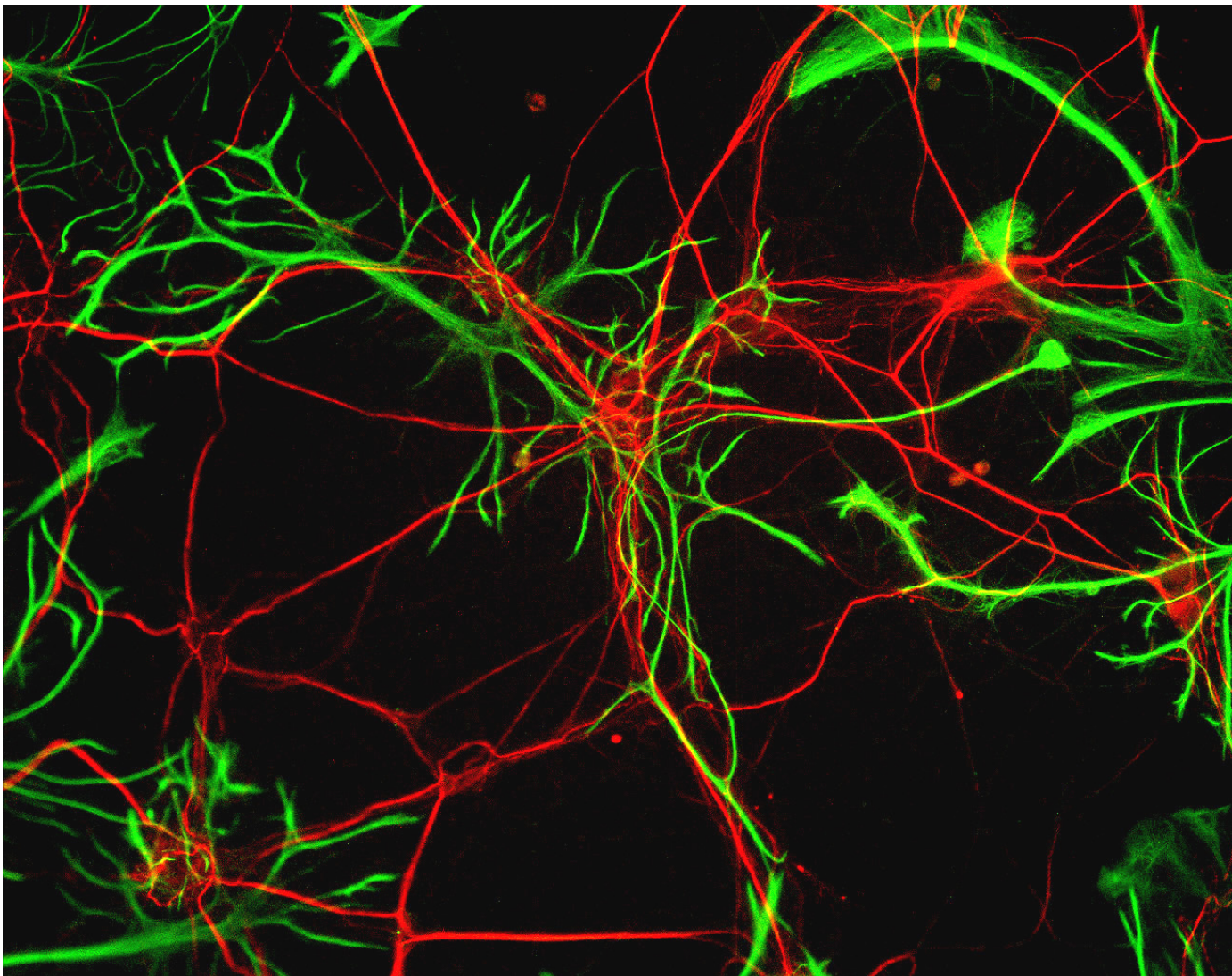
GFAP

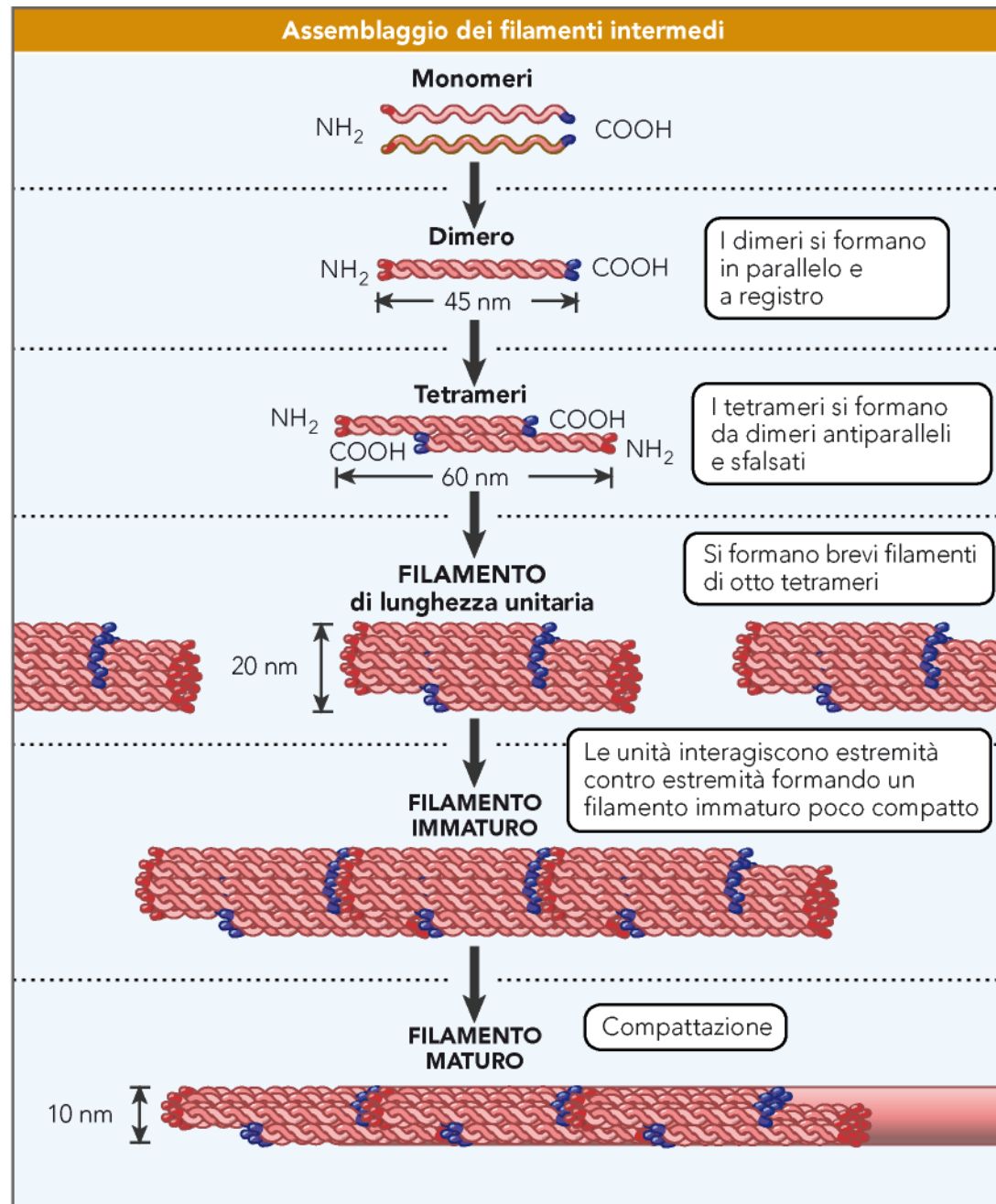


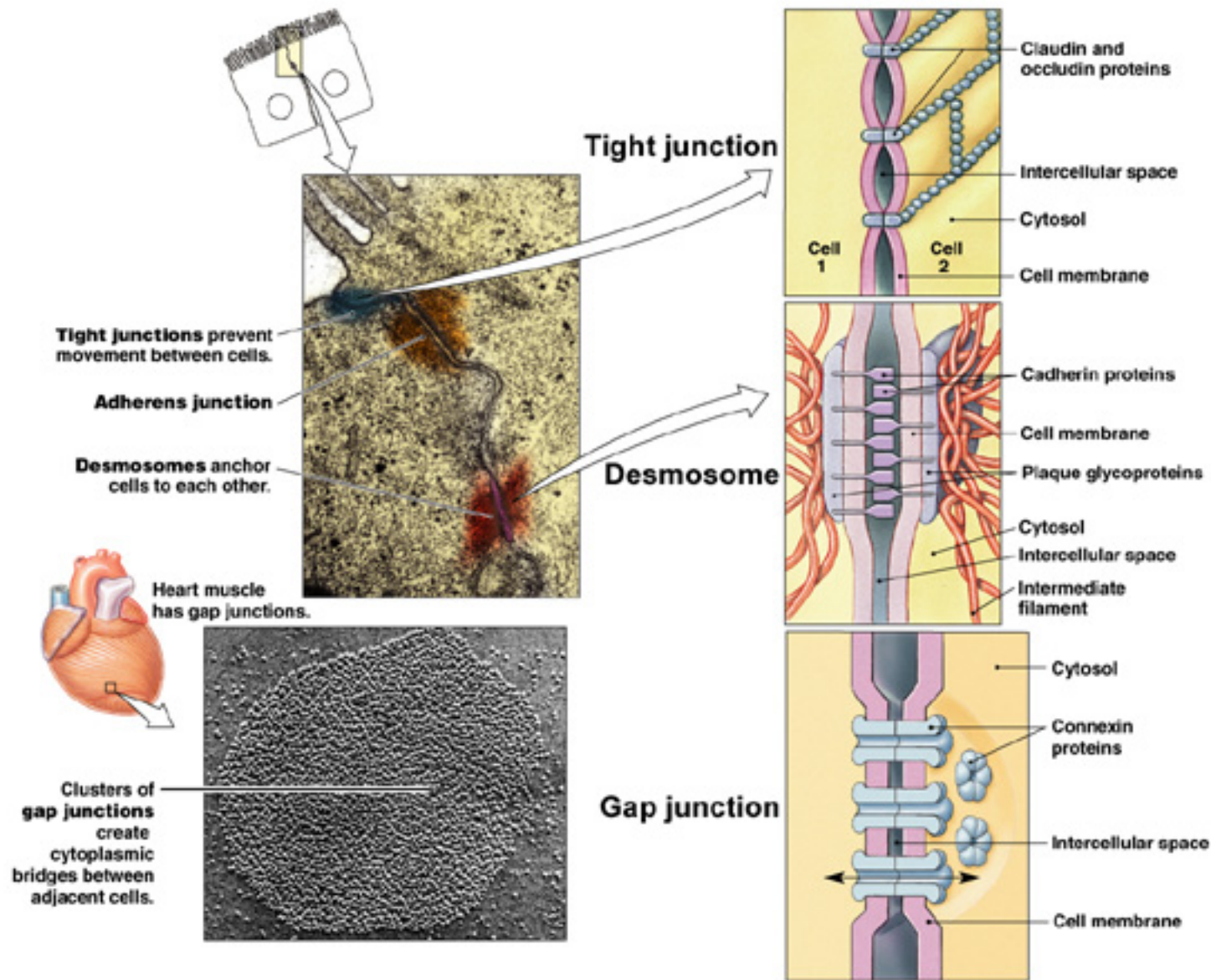
neurofilamenti

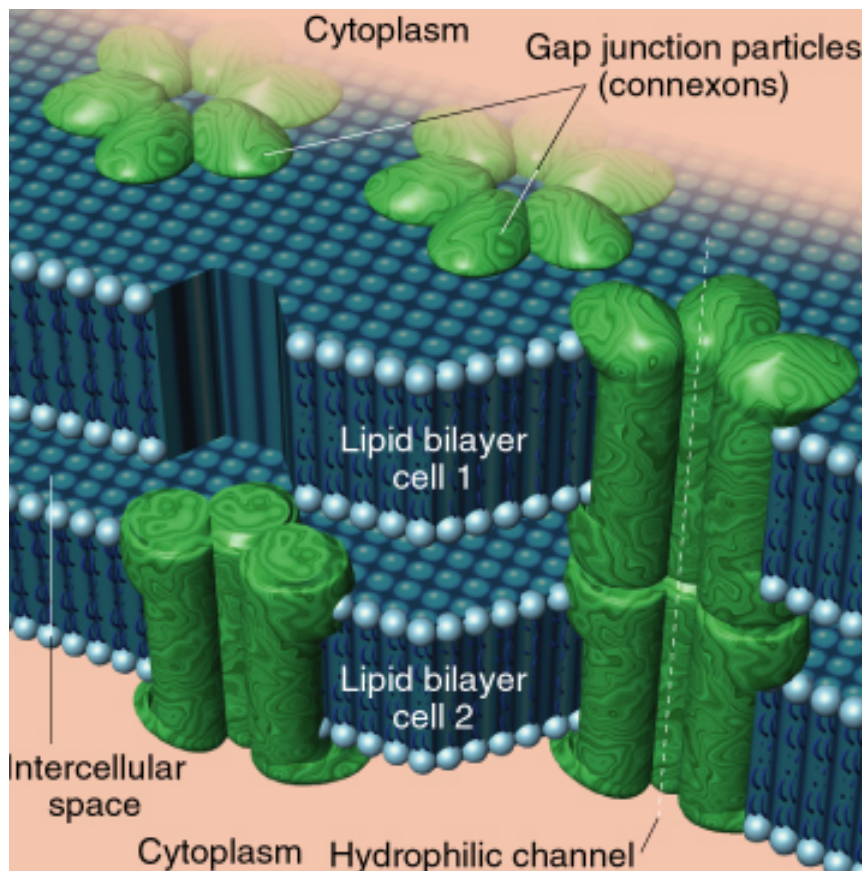
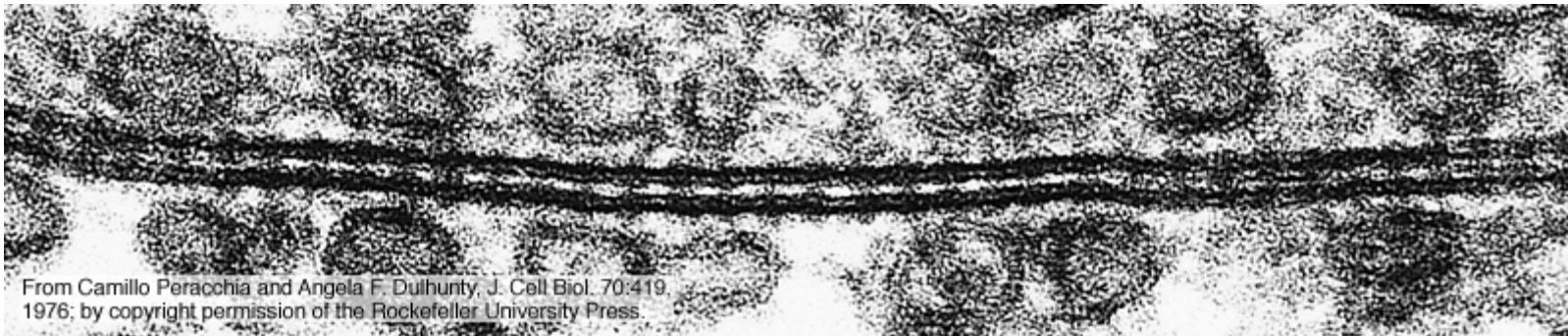


- Anti-neurofilamenti (cellule neuronali)
- Anti-GFAP (cellule gliali)









GAP junction

